

## Touch Screen Calibration for Screens with a built in Computer.

The Touch Screen action can be calibrated by running the calibration program. Exit the MMCX software by touching the store name in the upper right corner of a search screen and entering 33124. Choose Go to Windows. Press or Click on the **Start** button in the lower-left corner of the screen. Then Press or Click **Programs – IdeaCom Touch Screen – IdeaCom Calibration**. The Calibration Program will present a screen with a blinking target and ask you to press the target until it beeps or stops blinking. This is repeated for a total of nine different points on the screen. After the last one stops blinking, the program exits and your screen is calibrated. When completed double-click the **MMCX** Icon on the screen to re-start the Software.

## Touch Screen Calibration for Screens with a separate Computer.

Your interactive system will, in most cases, use either an ELO or TekVisions driver. Some of the more recent systems have shipped with a TouchEasy screen. Each of these is calibrated (aligned) with a different tool.

Your touch screen will connect to your computer with either a serial or USB connection. Knowing which of these is used will help you to look for the appropriate tool for calibrating the touch screen. If yours uses a serial connection, in most cases, you will be using an ELO driver and, thus, the ELO alignment tool. If you have a USB connection, you could be using any of the alignment tools depending on the brand of touch screen. If your touch screen is not responding at all, it would be valuable to check that all connections between the computer and touch screen are secure before you proceed.

If you don't know which type of connection your touch screen uses, you can usually find the correct alignment tool simply by identifying the tool that is installed on your computer.

Most serial touch screens, regardless of brand, use the ELO tool. TekVisions USB touch screens will, except for recent models, use the TekVisions tool (newer ones use the ELO USB driver). TouchEasy touch screens will use the TouchEasy tool for either serial or USB connections. Each of these tools is described below.



**USB Cable**

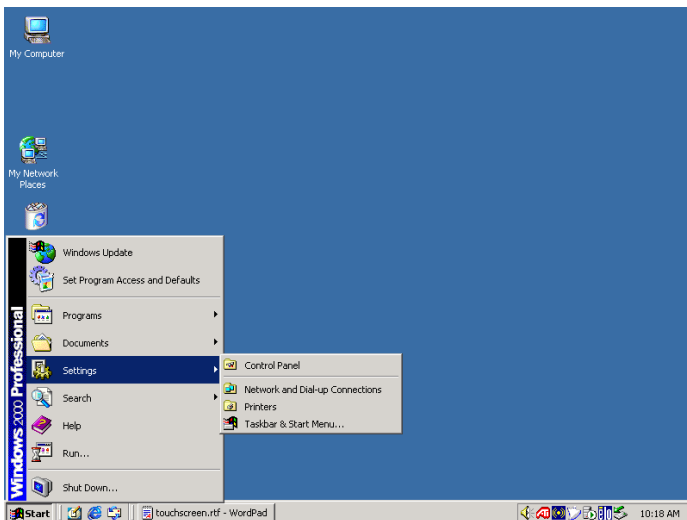


**Serial Cable**

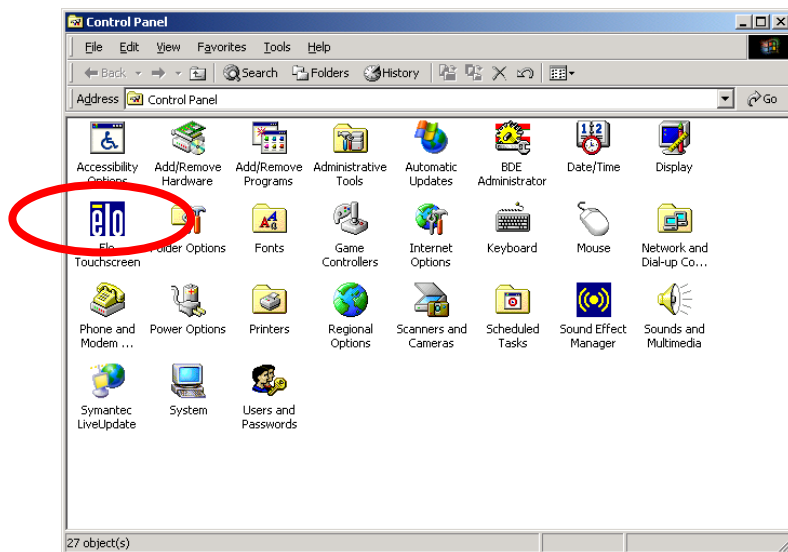
## ELO Calibration Tool


The ELO tool may sometimes be visible in the system tray or notification area just to the left of the time in the lower right corner of your Windows desktop screen. It can be accessed by either right-clicking and choosing align or by double-clicking and then following the same remaining steps as when you start the utility from control panel. Following are steps to locate and use the utility in control panel.

- Click the Start button
- Select Settings, then Control Panel



Open the Elo applet by double-clicking the Elo icon



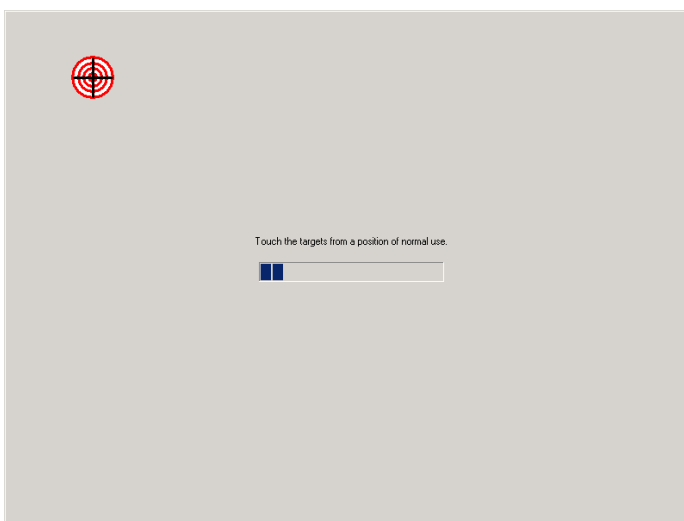
(If you need to do this without a working mouse or touch screen you can press and release the windows key  between Ctrl and Alt and then use the arrow keys to get to the control panel and open the ELO applet).

The initial (general tab) has an option to calibrate. It may be titled Calibrate, Align or it may just be an icon (fingers and cross marks on a display).



Click the button in the lower center part of the window (if using the keyboard, press enter).

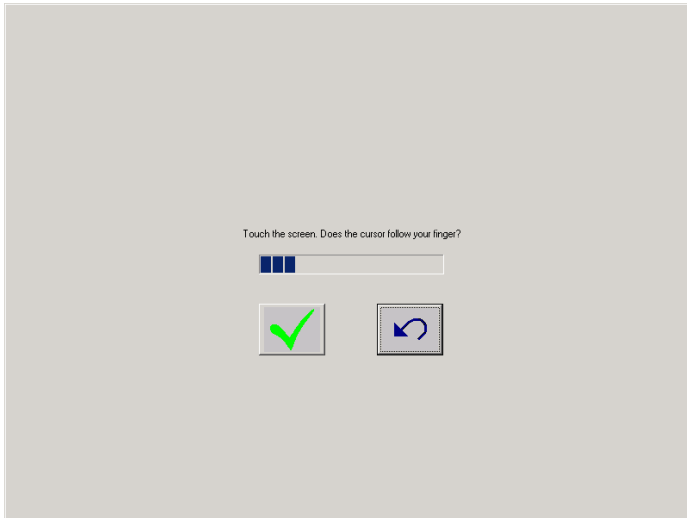
Touch the target that is displayed in the upper left corner. Hold for a couple of seconds and release.



Touch the target that appears in the lower right corner.

Touch the target that appears in the upper right corner.

The next screen is an alignment check.



Touch various places on the screen and see that the cursor jumps to the point of touch.

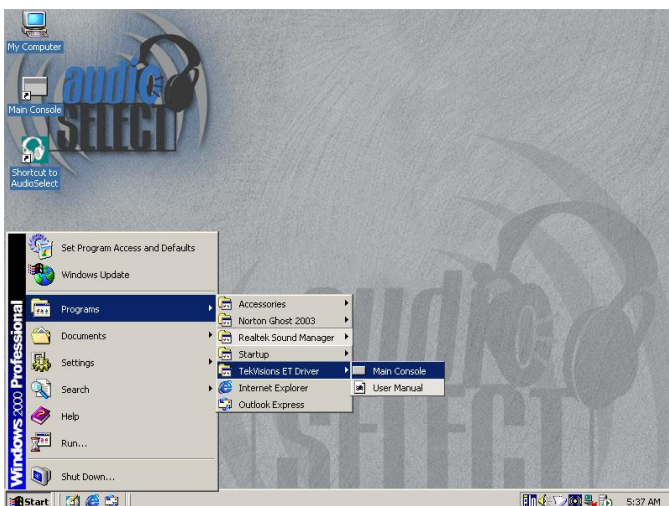
The progress bar displays time remaining before the routine will time out; if alignment is not confirmed by the time the indicator reaches the right end of the bar, the process is aborted and the new alignment points are not retained.

If response is correct, touch the Accept button which may be a Yes button or a green check.

Clicking the No or redo arrow icon will display the targets again to rerun the alignment routine.

## **TekVisions Calibration Tool**

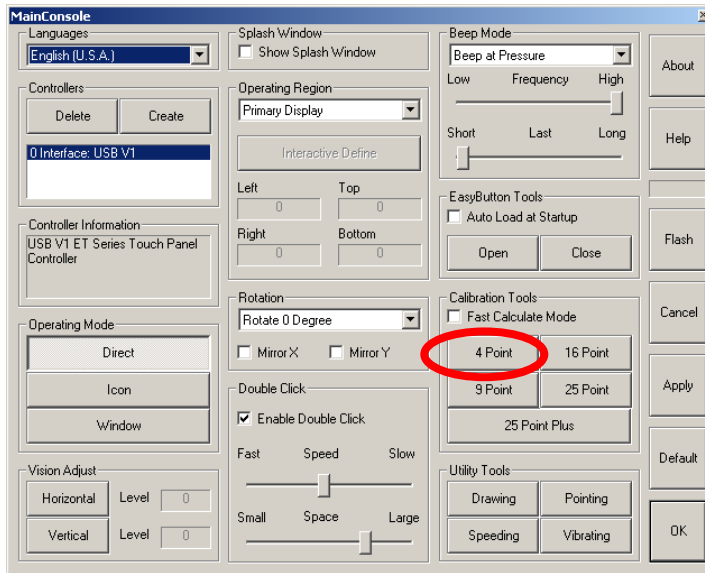
The TekVisions tool can be accessed either from a desktop icon labeled, "Main Console" or from the Program Files menu on the start menu as seen in the screenshot below.



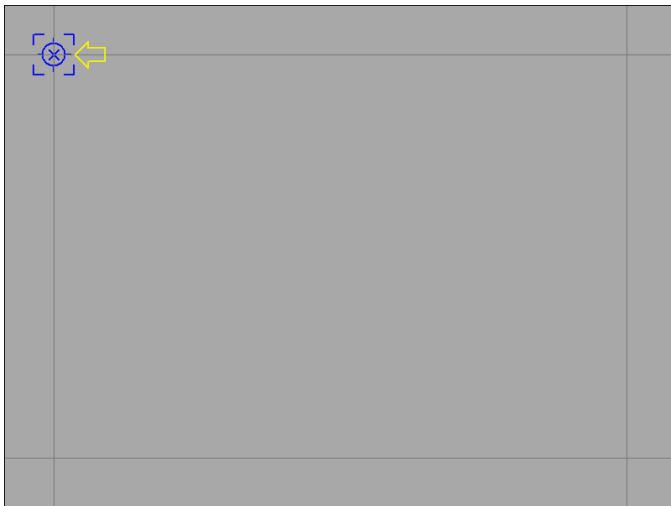
Verify on the main console window that a device is listed in the controllers section in the

upper left. If nothing is listed in the white rectangle, you should attempt to create the connection by clicking “Create.” If a USB touch screen is attached, it should be detected and listed in the rectangle.

Proceed with calibration by clicking the 4 Point button the Calibration Tools section in the lower right part of the screen.

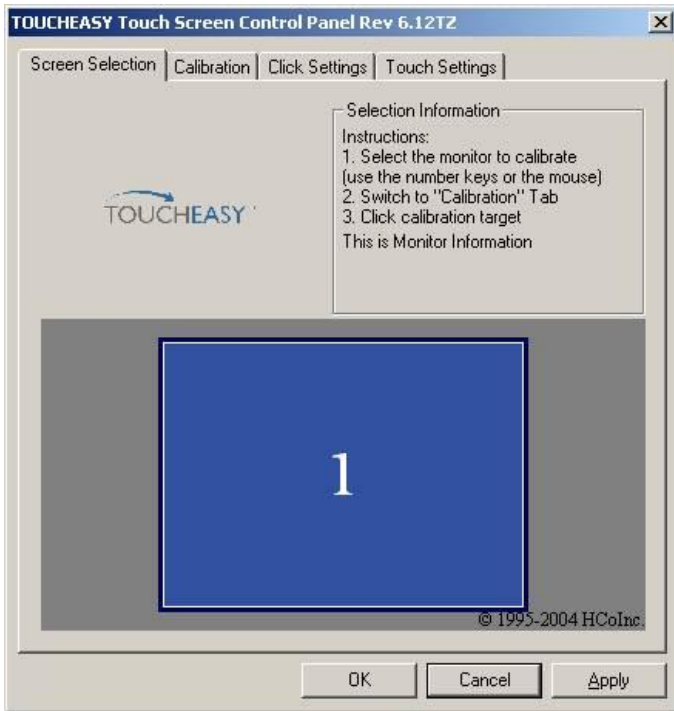


You will be presented with a series of four targets. Press and hold each for about 3 seconds.

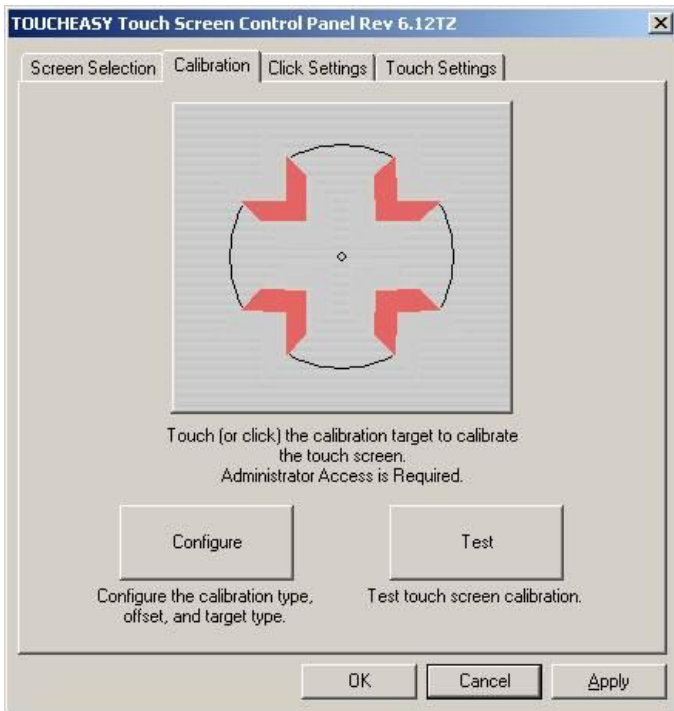


When you have completed all four, you will be returned to the main console window. Click OK to complete the calibration process.

From Start -> All Programs, go to TOUCHEASY Touch Screen Control Panel to calibrate the touch screen.

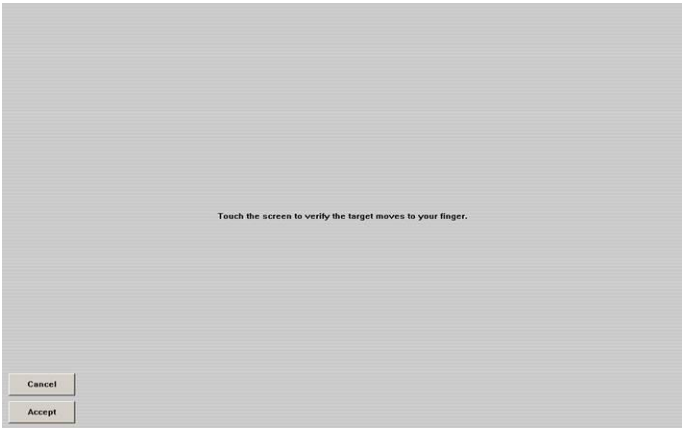
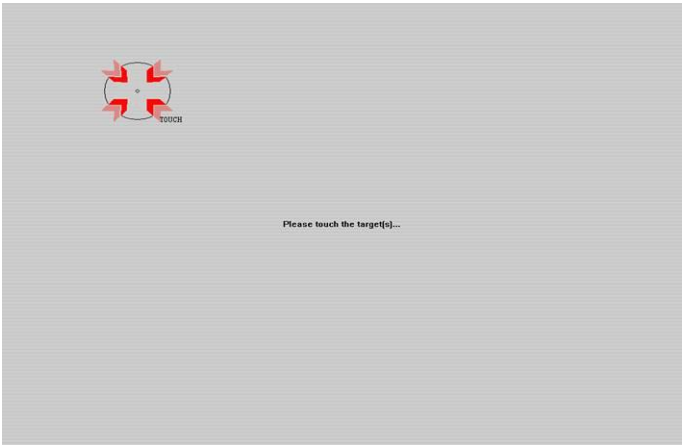


Select the Calibration tab with your mouse. Click or touch the converging arrows at the top to calibrate.



6

Touch the four targets like the one below. Hold and release as prompted by the text near each target.



If the screen responds with targets where you touch, you can touch the accept button to finish calibration.